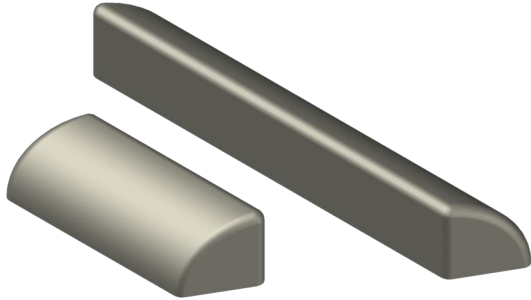


# ChemCurb System

The *ChemCurb* penetration pieces consist of the following sizes:



## ChemCurb Straights

6" & 12" straight sections used to lengthen the *ChemCurb*. Fit both curb sizes.

F1304P (6" - Gray)

-Contains 8 straights per carton only.

F1303P (12" - Gray)

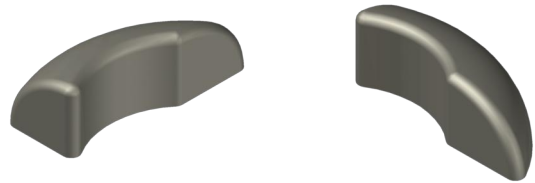
-Contains 8 straights per carton only.

## ChemCurb Corners

2" corner pieces used with straight sections to make box shapes.

F1305P (Gray)

-Contains 8 Corners per carton only.



## ChemCurb Diameter Rounds

5" diameter ID round consisting of (2) 2.5" radius pcs.

F1302P (Gray)

-Contains 6 curbs per carton only.

F1307P (1-Part Gray Kit)

-Contains 3 curbs per carton with (1) 1/2 gallon pouch of 1-Part™ Pourable Sealant and (2) 10.1 oz. cartridges of M-1® Structural Sealant.



7.5" Diameter ID round consisting of (2) 3.75" radius pcs.

F1301P (Gray)

-Contains 4 curbs per carton only.

F1306P (1-Part Gray Kit)

-Contains 2 curbs per carton with (2) 1/2 gal. pouches of 1-Part™ Pourable Sealant and (2) 10.1 oz. cartridges of M-1® Structural Sealant.

F1300P (ProPack Kit)

-Contains 2 Curbs per carton with 1 gal. of PRO PACK™ black, two-part urethane sealer and (2) 10.1 oz. cartridges of M-1® Structural Sealant.



# HOW TO CALCULATE CHEMCURB VOLUMES

Note: These figures represent volume of sealant needed for various sizes of curb combinations **without displacement for penetrations**. (To estimate exact volume needed, also figure volume of penetrations and subtract from volume of curbs.)

**To figure volume of a square curb: Multiply length x width x depth, (2") x (quantity of curbs needed) the divide by 231 (in<sup>3</sup> in a gal.) to get the number of gallons needed to fill the curb.**

**Note:**

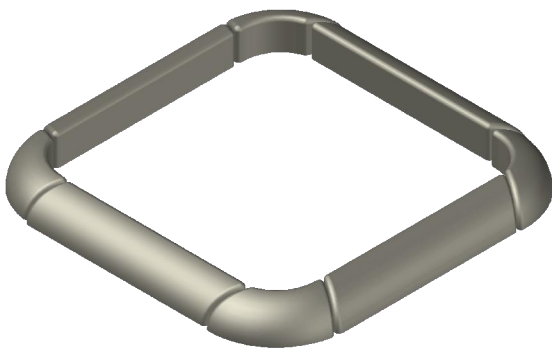
- One gal. pourable sealer = 231 in<sup>3</sup>
- One  $\frac{1}{2}$  gal. pouch = 115.5 in<sup>3</sup>
- One 28 oz cartridge = 50 in<sup>3</sup>
- One 10.1 oz cartridge = 4.18 in<sup>3</sup>

**Always figure 2" depth of ChemCurbs. Less invalidates warranty. A corner curb adds two inches to a straight curb on each end.**

**Examples:**

**Four 12" Straights + Four 2" Corners**

Form a square 16" x 16" x 2" deep.  
Multiply 16" x 16" x 2" = 512 in<sup>3</sup>  
Divide 512 in<sup>3</sup> by 231 = 2.21 gal



**Four 6" Straights + Four 2" Corners**

Form a square 10" x 10" x 2" deep.  
Multiply 10" x 10" x 2" = 200 in<sup>3</sup>  
Divide 200 in<sup>3</sup> by 231 = 0.86 gal

**7.5" round Curb + two 12" Straights**

Form an oval 19.5" x 7.5" x 2" deep.  
Multiply 19.5" x 7.5" x 2" = 285 in<sup>3</sup>  
Divide 285 in<sup>3</sup> by 231 = 1.23 gal

**7.5" round Curb + two 6" Straights**

Form an oval 13.5" x 7.5" x 2" deep.  
Multiply 13.5" x 7.5" x 2" = 202.5 in<sup>3</sup>  
Divide 202.5 in<sup>3</sup> by 231 = 0.88 gal

**5" round Curb + two 12" Straights**

Form an oval 17" x 5" x 2" deep.  
Multiply 17" x 5" x 2" = 170 in<sup>3</sup>  
Divide 170 in<sup>3</sup> by 231 = 0.73 gal

**5" round Curb + two 6" Straights**

Form an oval 11" x 5" x 2" deep.  
Multiply 11" x 5" x 2" = 110 in<sup>3</sup>  
Divide 110 in<sup>3</sup> by 231 = 0.48 gal



**To figure volume of a round curb: multiply (radius squared x 3.14 x depth) x (quantity of curbs needed) then divide by 231 (in<sup>3</sup>/gal) to get the number of gallons needed to fill the curb.**

**5" round Curb**

Form a diameter 5" x 2" deep.  
Multiply 2.5" squared x 3.14 x 2" = 39.27 in<sup>3</sup>  
Divide 39.27 in<sup>3</sup> by 231 = 0.17 gal

**7.5" round Curb**

Form a diameter 7.5" x 2" deep.  
Multiply 3.75" squared x 3.14 x 2" = 88.31 in<sup>3</sup>  
Divide 88.31 in<sup>3</sup> by 231 = 0.38 gal



CONTACT INFORMATION:

Customer Service: 800.826.1681

www.ChemLink.com

Date: Sep 30, 2016

Title: ChemCurbs

Sheet: 2 of 16

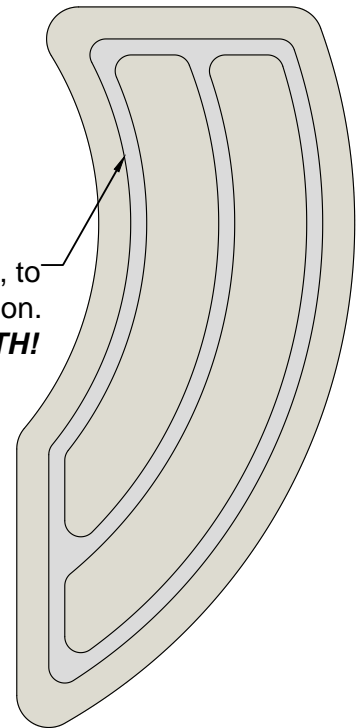
DRW #: CL-CC-02

Drawn by: Christian Appold

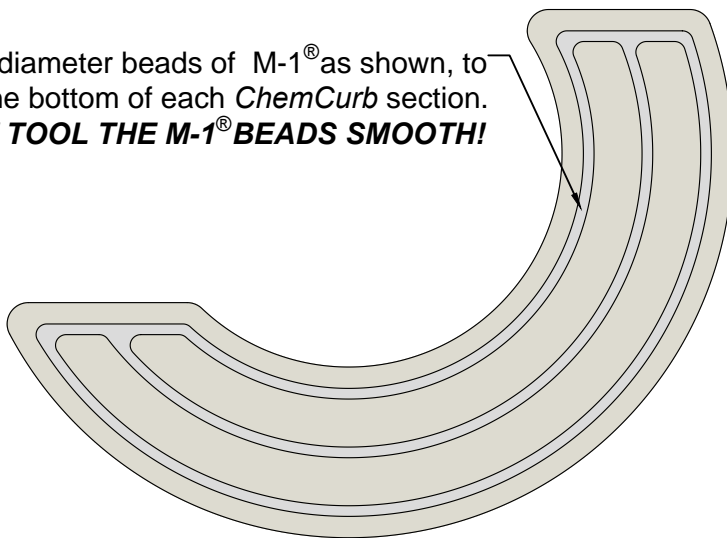
# M-1 APPLICATION TO THE BOTTOM OF THE CHEMCURB SECTIONS



Apply  $\frac{1}{4}$ " diameter beads of M-1<sup>®</sup> as shown, to the bottom of each *ChemCurb* section.  
**DO NOT TOOL THE M-1<sup>®</sup> BEADS SMOOTH!**

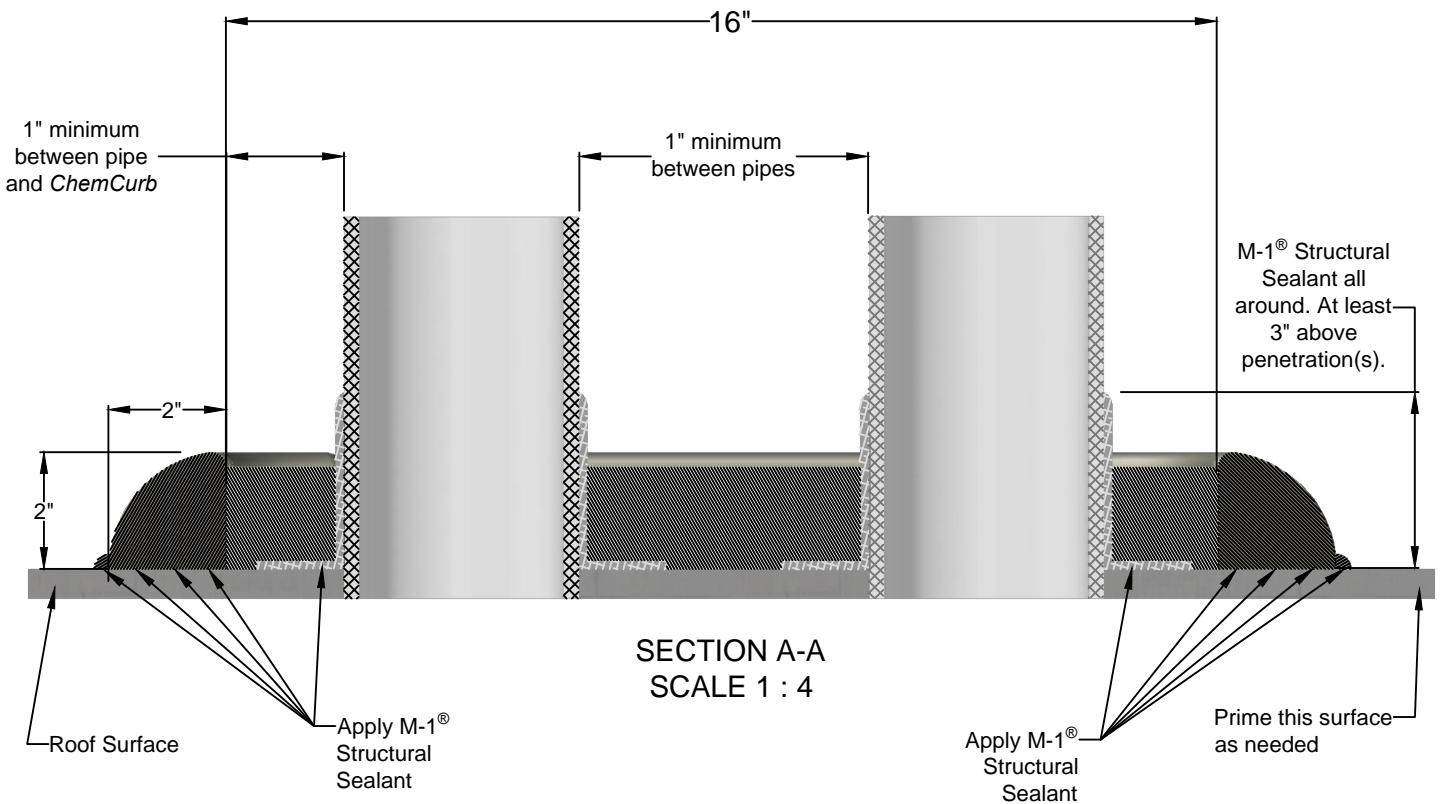
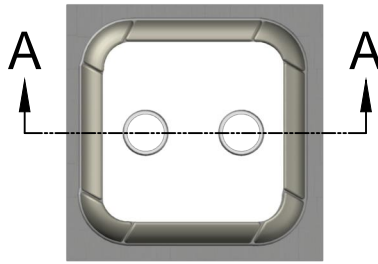


Apply  $\frac{1}{4}$ " diameter beads of M-1<sup>®</sup> as shown, to the bottom of each *ChemCurb* section.  
**DO NOT TOOL THE M-1<sup>®</sup> BEADS SMOOTH!**



Apply  $\frac{1}{4}$ " diameter beads of M-1<sup>®</sup> as shown, to the bottom of each *ChemCurb* section.  
**DO NOT TOOL THE M-1<sup>®</sup> BEADS SMOOTH!**

# SECTION VIEW



CONTACT INFORMATION:

Customer Service: 800.826.1681  
www.ChemLink.com

Date: May 12, 2013

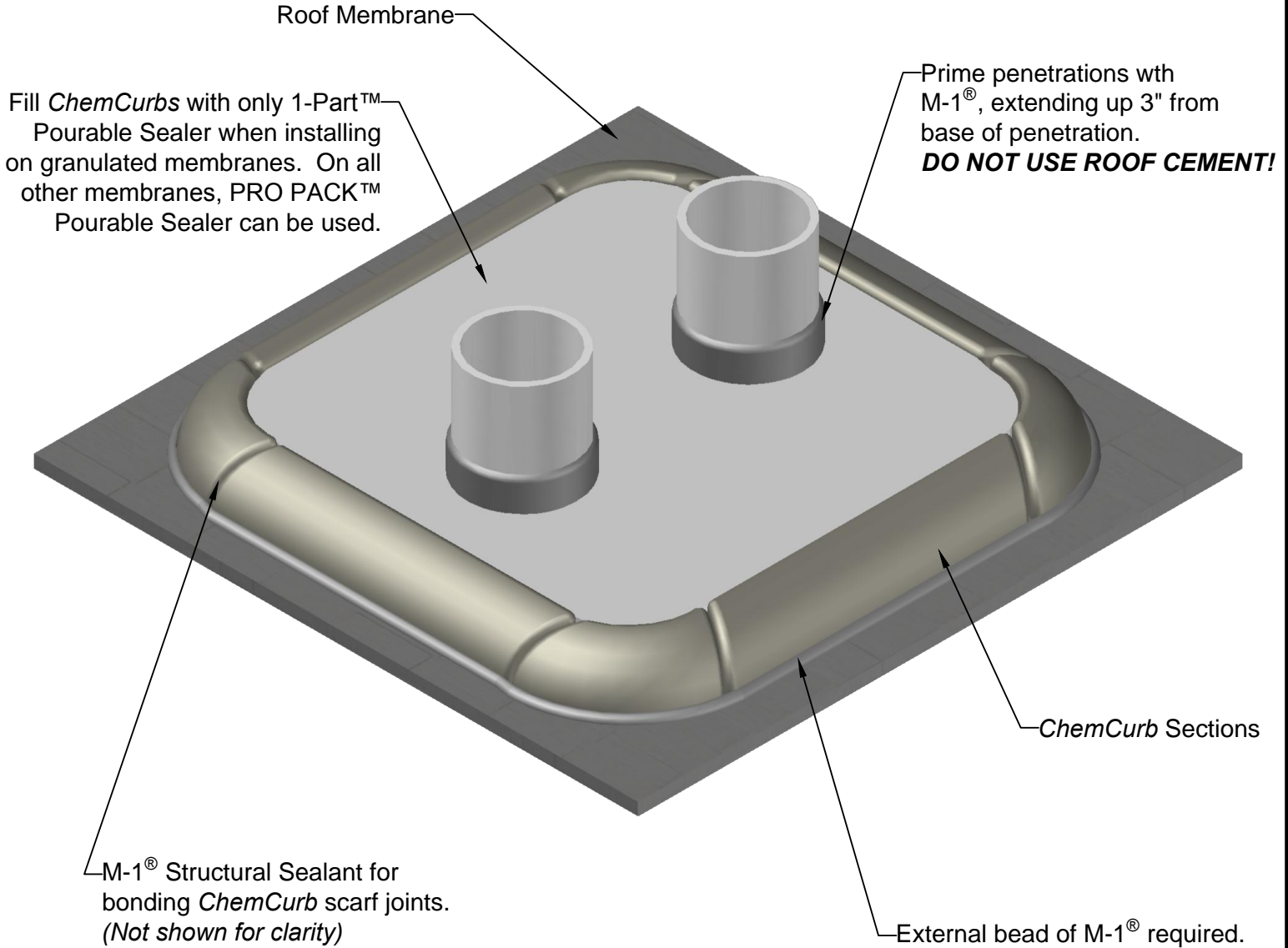
Title: ChemCurbs

Sheet: 4 of 16

DRW #: CL-CC-02

Drawn by: Christian Appold

# STANDARD CHEMCURB DETAIL



**A minimum 1" space is required between all penetrations and the interior wall of all ChemCurbs.**



CONTACT INFORMATION:

Customer Service: 800.826.1681

[www.ChemLink.com](http://www.ChemLink.com)

Date: May 12, 2013

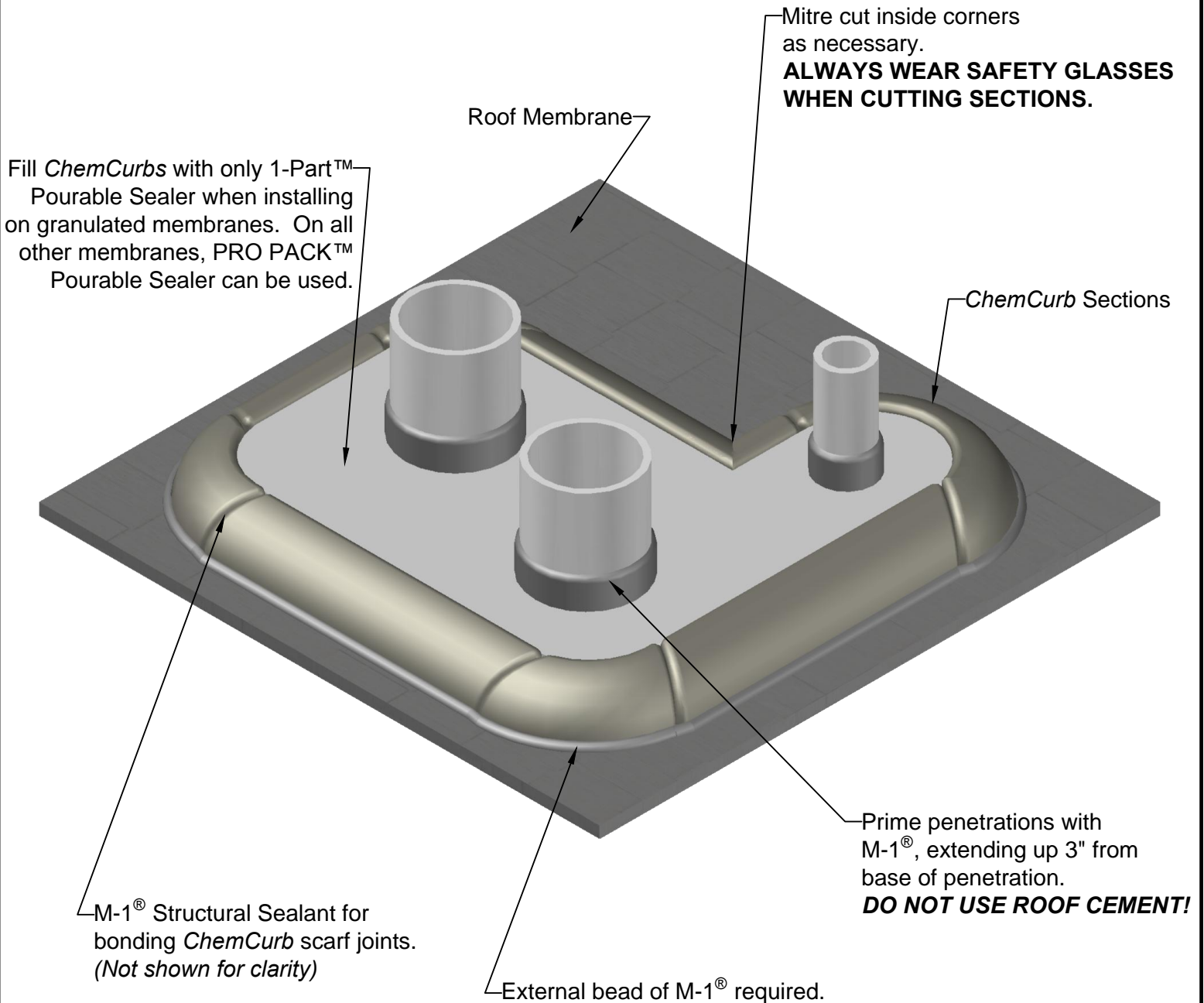
Title: ChemCurbs

Sheet: 5 of 16

DRW #: CL-CC-02

Drawn by: Christian Appold

# L - SHAPED CONFIGURATION



**A minimum 1" space is required between all penetrations and the interior wall of all *ChemCurbs*.**



CONTACT INFORMATION:

Customer Service: 800.826.1681

[www.ChemLink.com](http://www.ChemLink.com)

Date: May 12, 2013

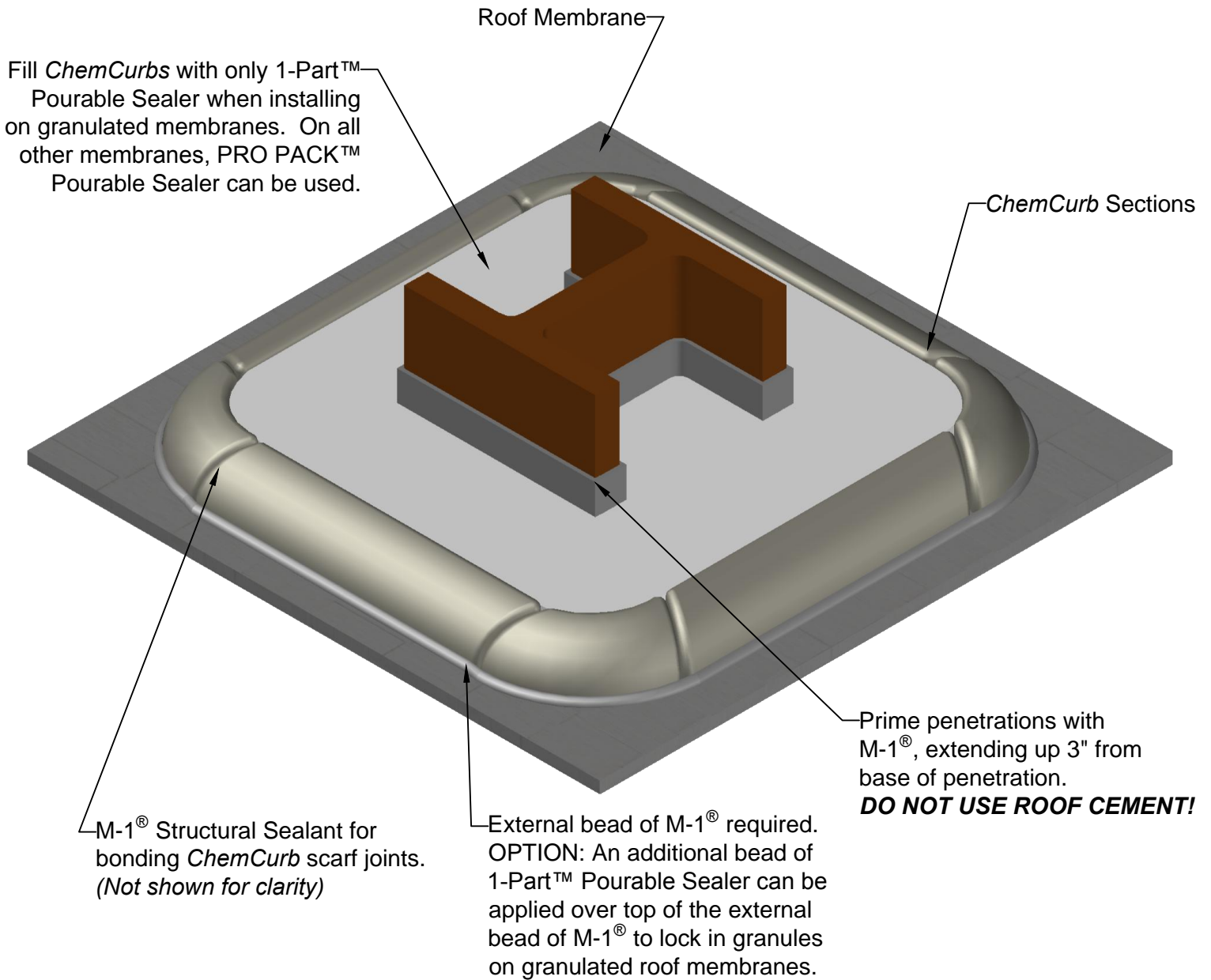
Title: ChemCurbs

Sheet: 6 of 16

DRW #: CL-CC-02

Drawn by: Christian Appold

# H - BEAM PENETRATION



***A minimum 1" space is required between all penetrations and the interior wall of all ChemCurbs.***



CONTACT INFORMATION:

Customer Service: 800.826.1681

[www.ChemLink.com](http://www.ChemLink.com)

Date: May 12, 2013

Title: ChemCurbs

Sheet: 7 of 16

DRW #: CL-CC-02

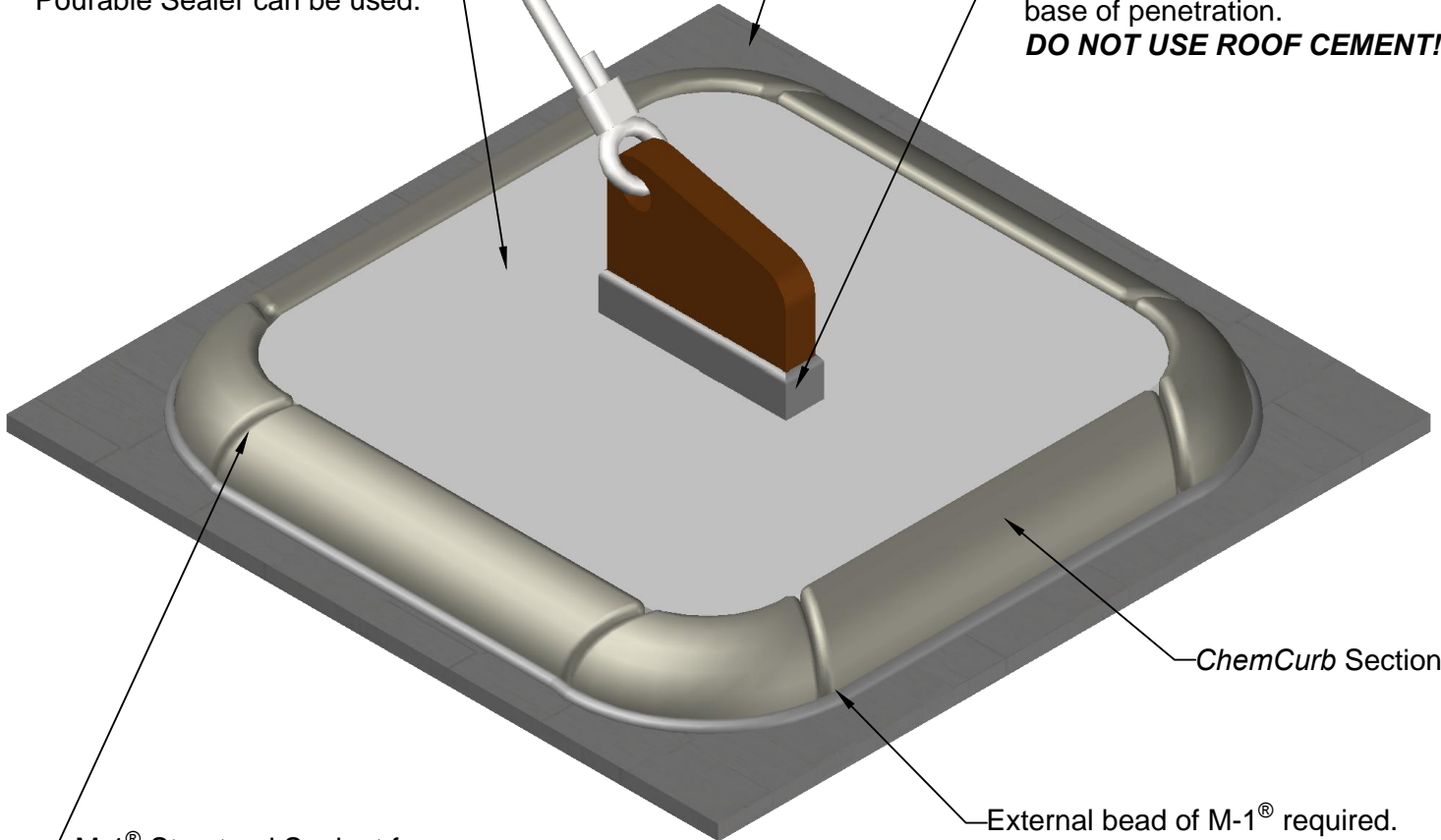
Drawn by: Christian Appold

# CABLE SUPPORT PENETRATION

Fill *ChemCurbs* with only 1-Part™ Pourable Sealer when installing on granulated membranes. On all other membranes, PRO PACK™ Pourable Sealer can be used.

Roof Membrane

Prime penetrations with M-1®, extending up 3" from base of penetration.  
**DO NOT USE ROOF CEMENT!**



*ChemCurb* Sections

M-1® Structural Sealant for bonding *ChemCurb* scarf joints.  
(Not shown for clarity)

External bead of M-1® required.  
OPTION: An additional bead of 1-Part™ Pourable Sealer can be applied over top of the external bead of M-1® to lock in granules on granulated roof membranes.

**A minimum 1" space is required between all penetrations and the interior wall of all *ChemCurbs*.**



CONTACT INFORMATION:

Customer Service: 800.826.1681

[www.ChemLink.com](http://www.ChemLink.com)

Date: May 12, 2013

Title: ChemCurbs

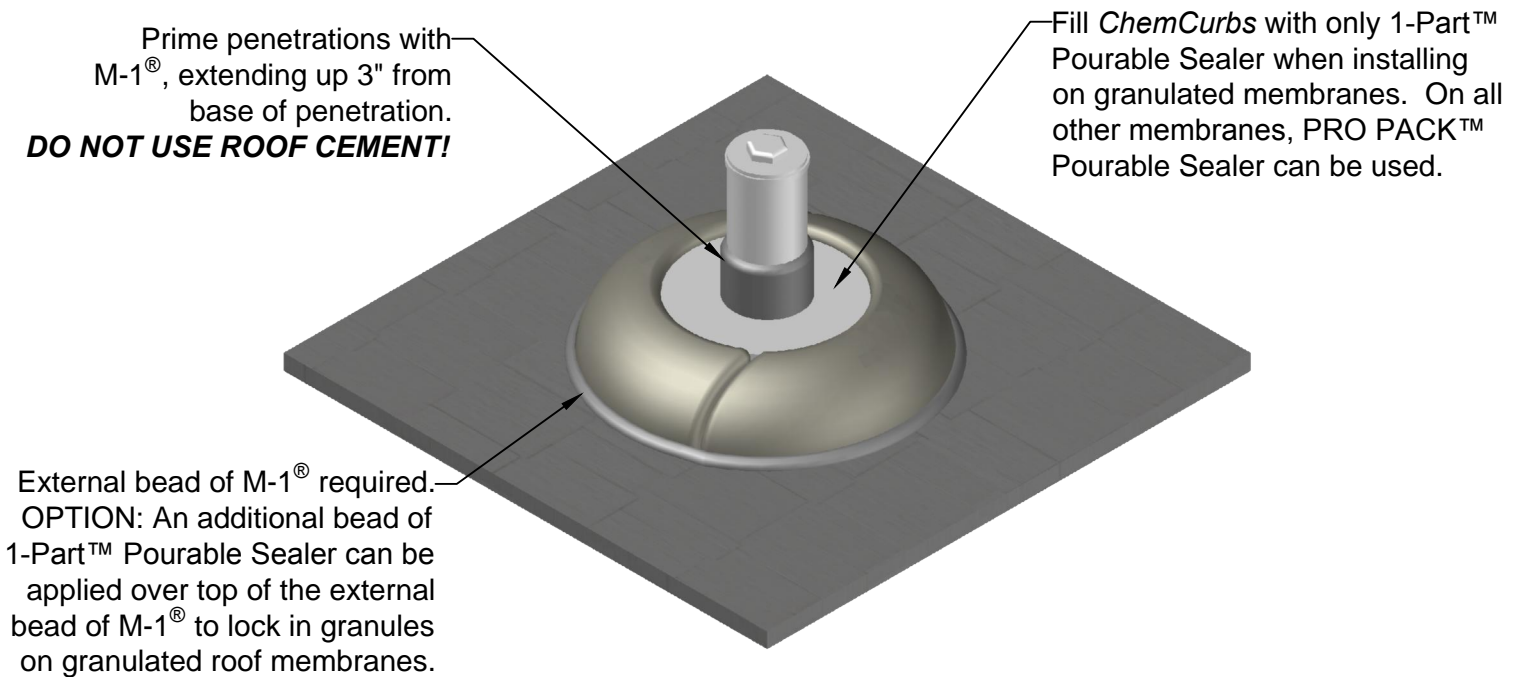
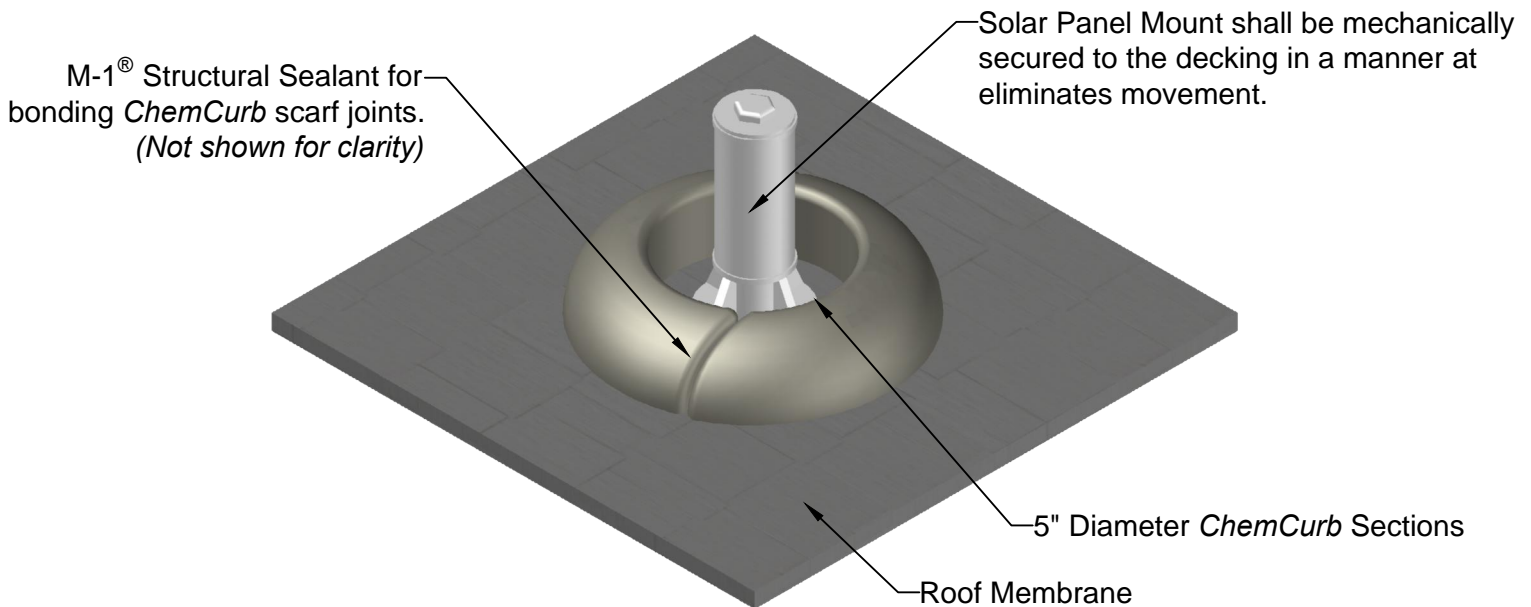
Sheet: 8 of 16

DRW #: CL-CC-02

Drawn by: Christian Appold



# SOLAR PANEL MOUNT



**A minimum 1" space is required between all penetrations and the interior wall of all ChemCurbs.**



CONTACT INFORMATION: Customer Service: 800.826.1681  
www.ChemLink.com

Date: May 12, 2013 Title: ChemCurbs Sheet: 9 of 16 DRW #: CL-CC-02 Drawn by: Christian Appold

# MACHINERY SCREEN

Fill *ChemCurbs* with only 1-Part™ Pourable Sealer when installing on granulated membranes and around high movement details.

Prime penetrations with M-1®, extending up 3" from base of penetration.  
**DO NOT USE ROOF CEMENT!**

Angle iron or support members shall be fabricated out of structural steel that is secured to the structural supports or decking in a manner that reduces structural movement as much as possible.

M-1® Structural Sealant for bonding *ChemCurb* scarf joints.  
(Not shown for clarity)

External bead of M-1® required. OPTION: An additional bead of 1-Part™ Pourable Sealer can be applied over top of the external bead of M-1® to lock in granules on granulated roof membranes.

*ChemCurb* Sections

Roof Membrane

**A minimum 1" space is required between all penetrations and the interior wall of all *ChemCurbs*.**



CONTACT INFORMATION:

Customer Service: 800.826.1681

www.ChemLink.com

Date: May 12, 2013

Title: ChemCurbs

Sheet: 10 of 16

DRW #: CL-CC-02

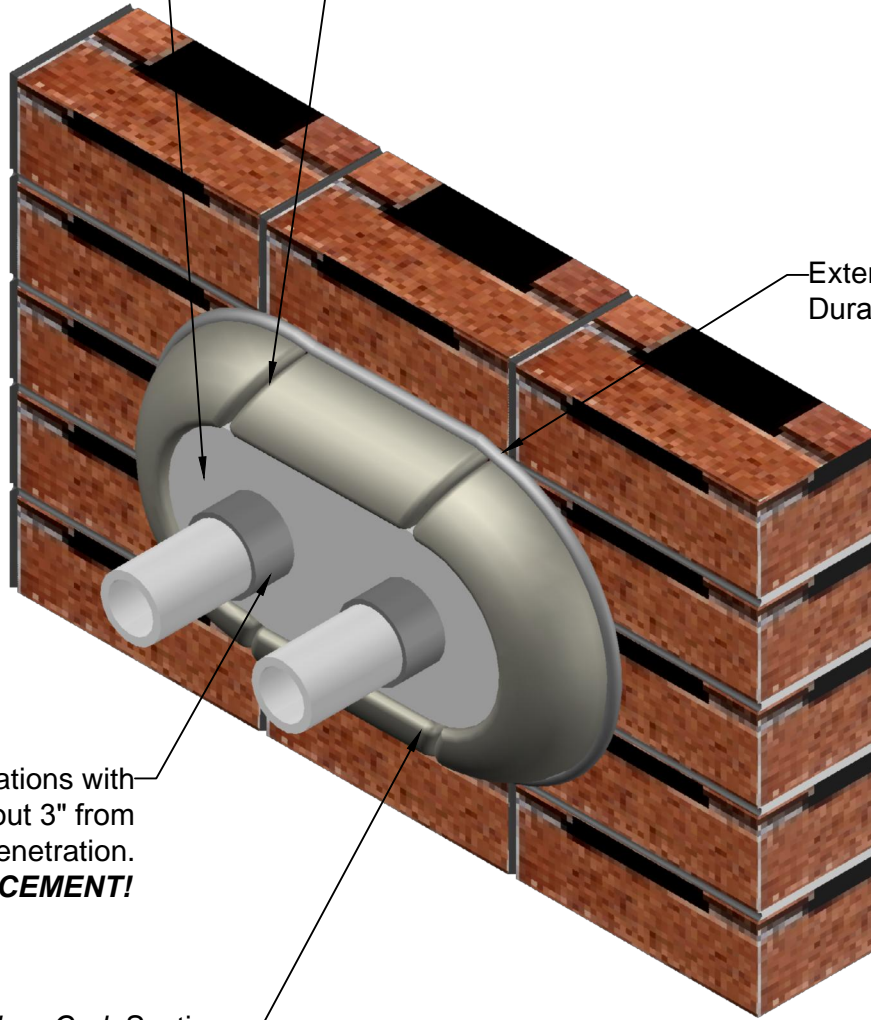
Drawn by: Christian Appold

# VERTICAL WALL PENETRATIONS

Trowel application of DuraLink™ flush with the top of the *ChemCurb*.

DuraLink™ Structural Sealant for bonding *ChemCurb* scarf joints. (Not shown for clarity)

External bead of DuraLink™ required.



Prime penetrations with DuraLink™, extending out 3" from base of penetration. **DO NOT USE ROOF CEMENT!**

ChemCurb Sections

**A minimum 1" space is required between all penetrations and the interior wall of all ChemCurbs.**



CONTACT INFORMATION:

Customer Service: 800.826.1681

[www.ChemLink.com](http://www.ChemLink.com)

Date: May 12, 2013

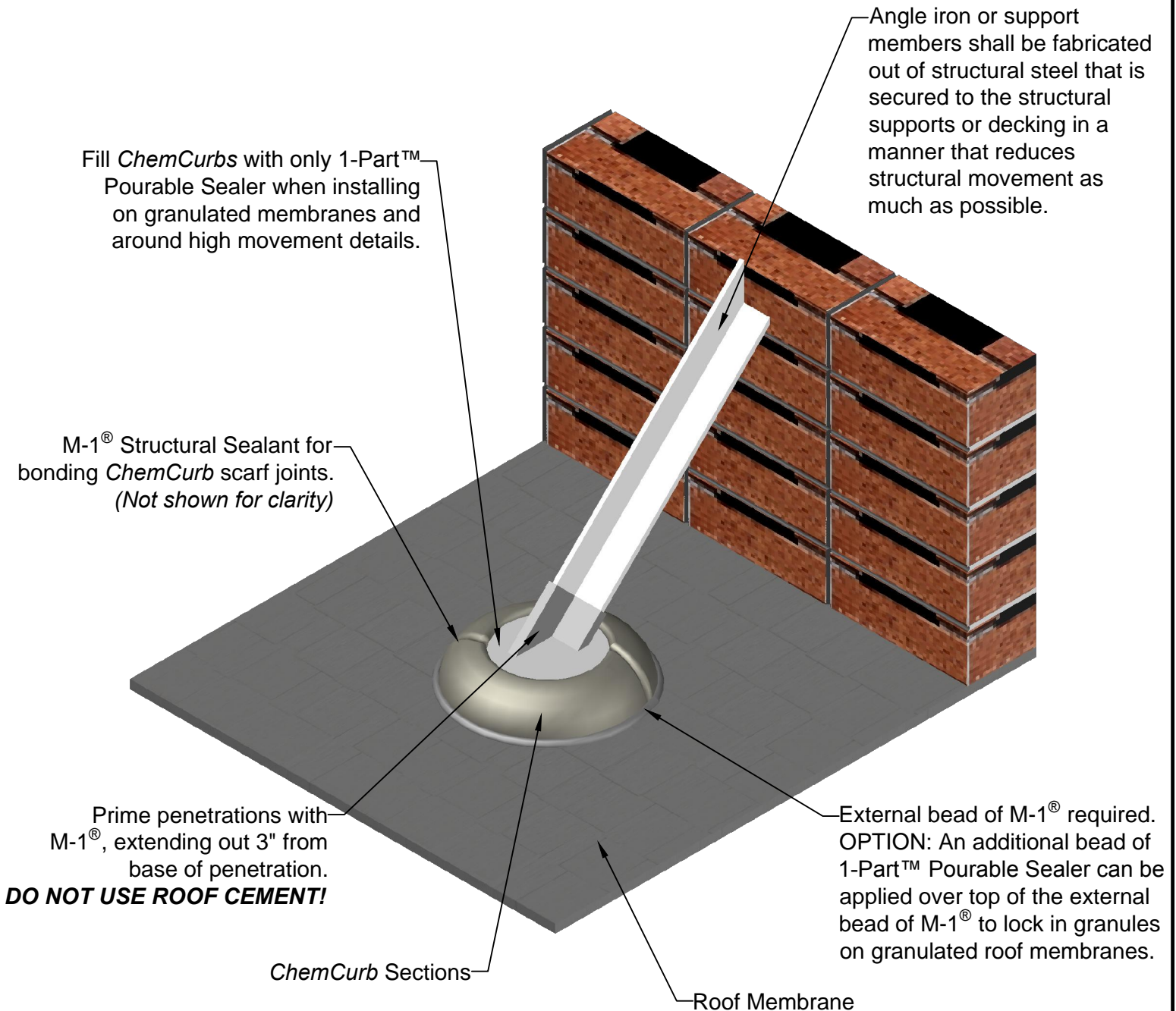
Title: ChemCurbs

Sheet: 11 of 16

DRW #: CL-CC-02

Drawn by: Christian Appold

# ANGLE IRON PENETRATION



***A minimum 1" space is required between all penetrations and the interior wall of all ChemCurbs.***



CONTACT INFORMATION:

Customer Service: 800.826.1681

[www.ChemLink.com](http://www.ChemLink.com)

Date: May 12, 2013

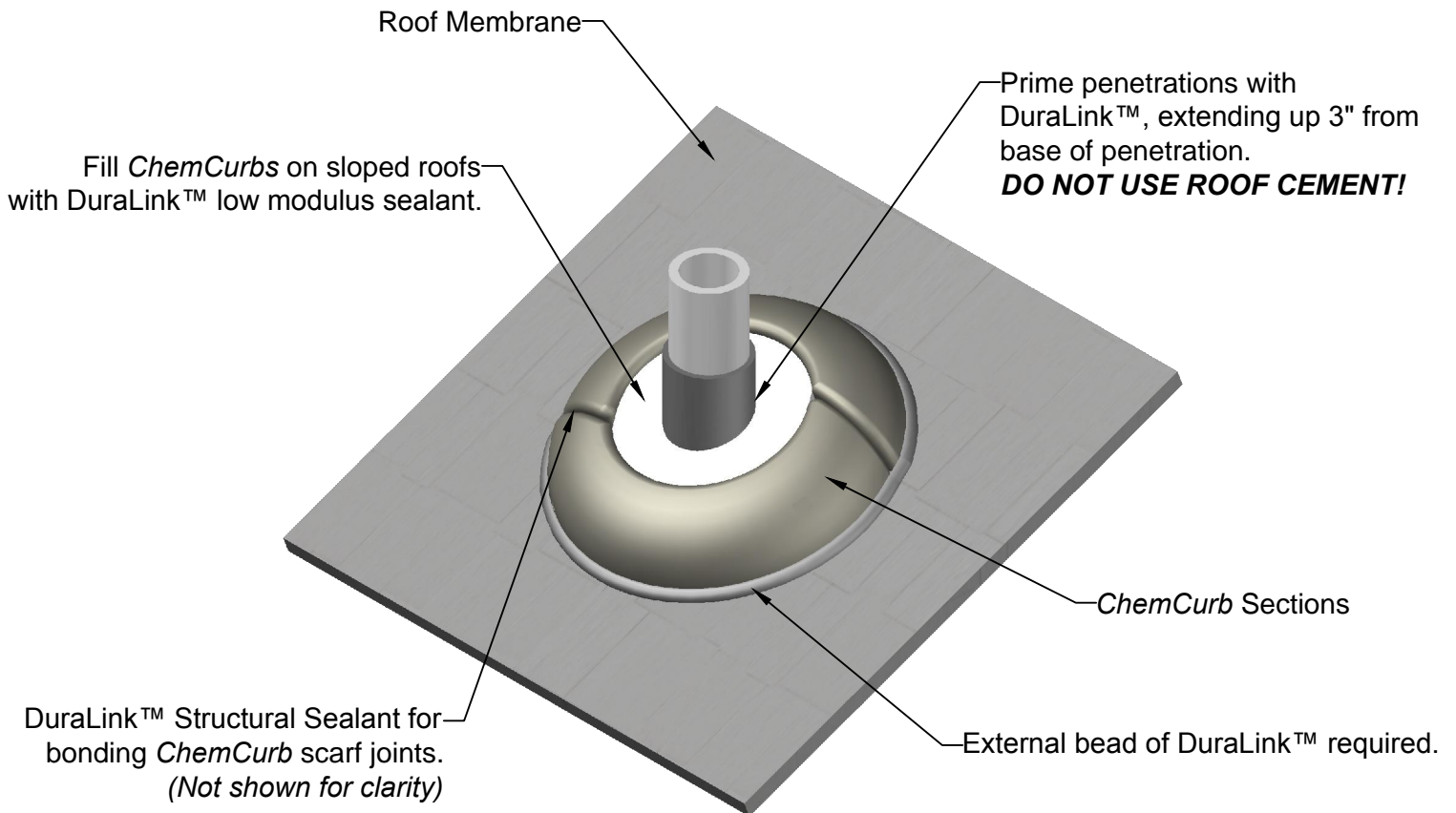
Title: ChemCurbs

Sheet: 12 of 16

DRW #: CL-CC-02

Drawn by: Christian Appold

# SLOPED ROOF PENETRATION



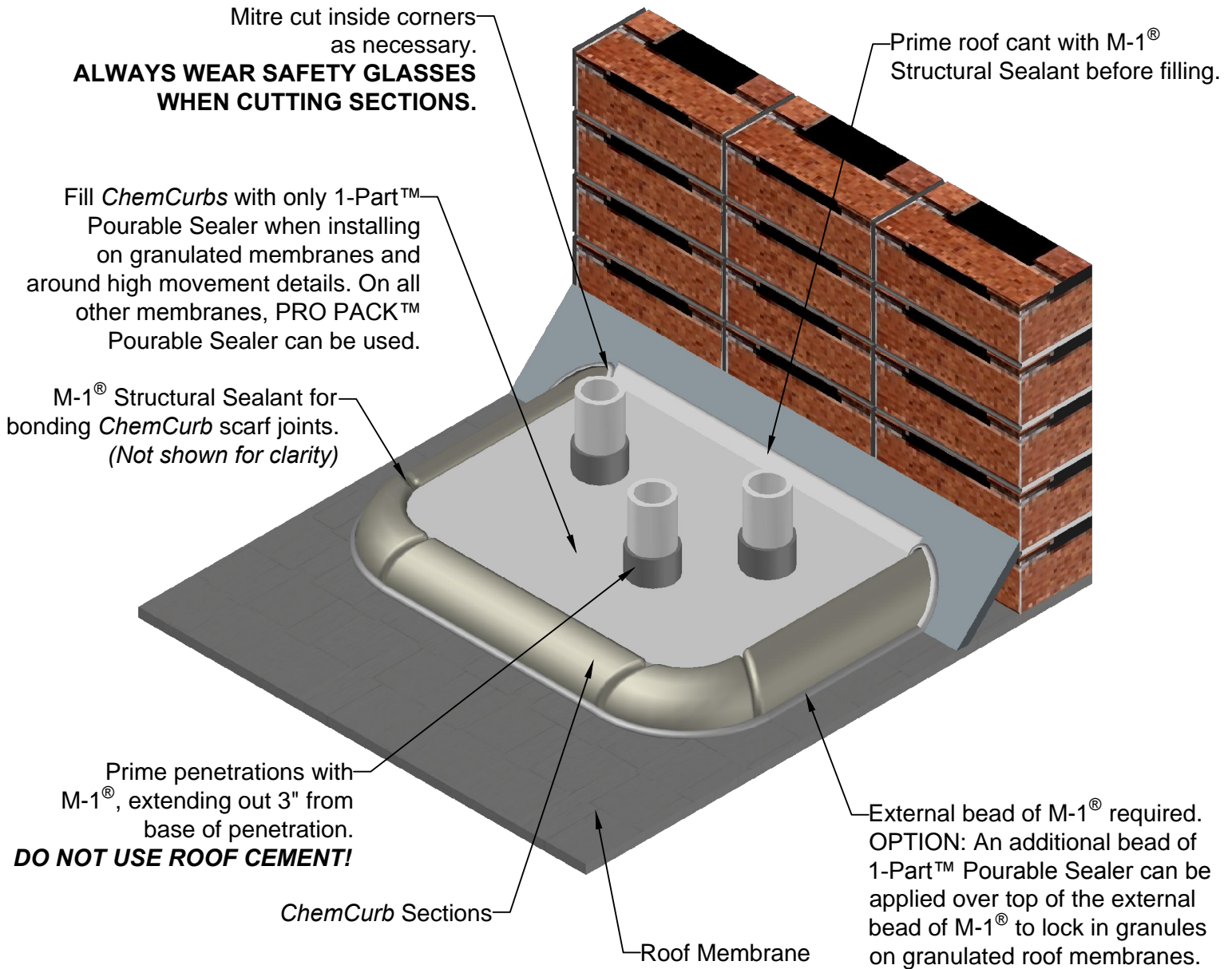
***A minimum 1" space is required between all penetrations and the interior wall of all ChemCurbs.***



CONTACT INFORMATION: Customer Service: 800.826.1681  
[www.ChemLink.com](http://www.ChemLink.com)

Date: May 12, 2013 Title: ChemCurbs Sheet: 13 of 16 DRW #: CL-CC-02 Drawn by: Christian Appold

# PENETRATION NEAR WALL FLASHING



***A minimum 1" space is required between all penetrations and the interior wall of all ChemCurbs.***



CONTACT INFORMATION:

Customer Service: 800.826.1681

[www.ChemLink.com](http://www.ChemLink.com)

Date: May 12, 2013

Title: ChemCurbs

Sheet: 14 of 16

DRW #: CL-CC-02

Drawn by: Christian Appold

# HOT STACK PENETRATION (200°F to 400°F)

Fill *ChemCurbs* with **DuraSil™ SL** silicone for low slope applications or **DuraSil™ Non Sag** silicone for sloped roof applications.

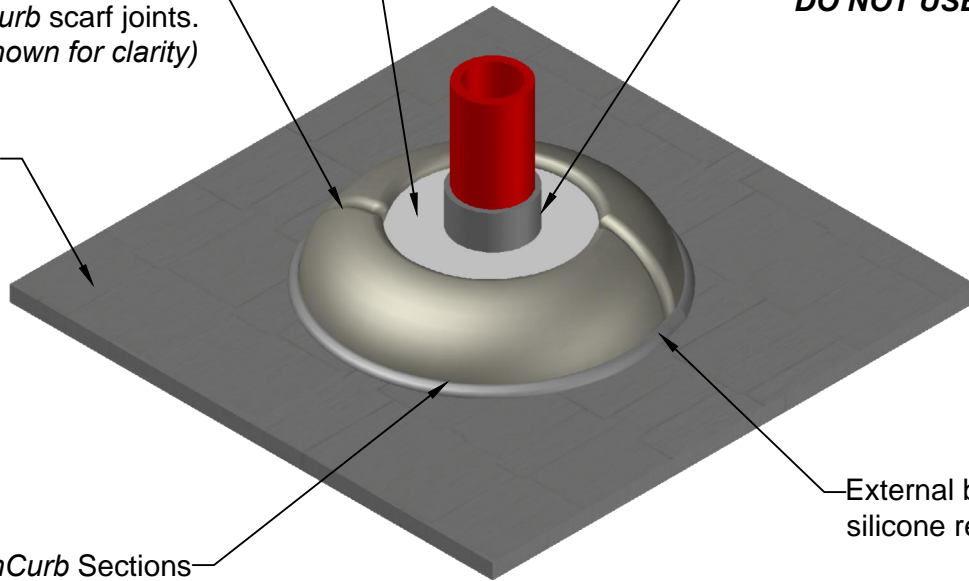
**DuraSil™** Silicone for bonding *ChemCurb* scarf joints. (Not shown for clarity)

Prime penetrations with **DuraSil™** silicone, extending up 3" from base of penetration. **DO NOT USE ROOF CEMENT!**

Roof Membrane

*ChemCurb* Sections

External bead of **DuraSil™** silicone required.



***A minimum 1" space is required between all penetrations and the interior wall of all ChemCurbs.***



CONTACT INFORMATION:

Customer Service: 800.826.1681

[www.ChemLink.com](http://www.ChemLink.com)

Date: May 12, 2013

Title: ChemCurbs

Sheet: 15 of 16

DRW #: CL-CC-02

Drawn by: Christian Appold

# TPO MEMBRANE

Apply *ChemLink* TPO Primer with a brush to the surface of the TPO membrane. Primer shall extend from the base of the penetration(s) to 1" beyond the outside perimeter of the *ChemCurb*.

Allow TPO primer to dry before installing the *ChemCurb*.

TPO Roof Membrane

*ChemCurb* Sections

Prime penetrations with M-1<sup>®</sup>, extending up 3" from base of penetration.

**DO NOT USE ROOF CEMENT!**

M-1<sup>®</sup> Structural Sealant for bonding *ChemCurb* scarf joints. (Not shown for clarity)

Fill *ChemCurbs* with only 1-Part<sup>™</sup> Pourable Sealer or PRO PACK<sup>™</sup> Pourable Sealer.

External bead of M-1<sup>®</sup> required.

**A minimum 1" space is required between all penetrations and the interior wall of all *ChemCurbs*.**



CONTACT INFORMATION:

Customer Service: 800.826.1681

[www.ChemLink.com](http://www.ChemLink.com)

Date: May 12, 2013

Title: ChemCurbs

Sheet: 16 of 16

DRW #: CL-CC-02

Drawn by: Christian Appold