

## E-CURB & CHEMCURB KITS & COMPONENTS

### E-CURB KITS



E-Curb kits include bisected circular pieces with inside diameters of 3, 4, 5, 6 or 9 inches, a 4.5 x 3.4 inch rectangle, 1-Part Pourable Sealant and M-1 Universal Adhesive/Sealant to complete installation.

E-Curb Kits are also available for purchase with DuraLink 50 polyether sealant for sloped or metal roofing or with DuraSil™ SL self-leveling silicone sealant for most silicone roof coatings and hot pipe penetrations which are suitable up to 400° F (204° C).

### CHEMCURB KITS



ChemCurb kits include bisected circular pieces with inside diameters of 5 or 7.5 inches, 1-Part Pourable Sealant and M-1 Universal Adhesive/Sealant to complete installation.

### PRO PACK 2-PART URETHANE POURABLE SEALER

The Pro Pack™ Chem Curb Kits include bisected circular pieces with inside diameter of 7.5 inches, M-1 Universal Adhesive/Sealant, Pro Pack resin and hardner, a mixing paddle and warranty card.

Pro Pack is a 2-part, pourable, 100% solids urethane sealant which requires mixing but delivers a much faster cure than 1-Part. Pro Pack is self-leveling, non-shrinking and cures to a flexible, long-lasting urethane seal.

### M-1 UNIVERSAL SEALANT/ADHESIVE



M-1 Universal Adhesive/Sealant is a high-strength adhesive/sealant available in 10.1 and 28 oz plastic cartridges. M-1 adheres to a wide range of roofing materials, forming a tough, elastic waterproof seal after cure.

### 1-PART® POURABLE PENETRATION SEALANT



1-Part is a pourable, self-leveling, 100% solids polyether sealant that requires no mixing. It cures with atmospheric moisture to a flexible rubber mass that will not shrink. Available in 10.1 oz. and 28 oz. cartridges or 1/2 gallon pouches.

### DURASIL™ SL SELF-LEVELING SILICONE SEALANT



DuraSil SL is a one-part, pourable, neutral cure, silicone-based sealant designed for use in E-Curb penetrations on silicone roof coatings as well as around HVAC, electrical or mechanical equipment, solar panel mounts, and applications where 400° F (204° C) "hot pipe" service is needed. Available in 2 liter pouches.

SEALANTS & ADHESIVES  
THAT DELIVER HIGH  
PERFORMANCE  
WITHOUT THE RISKS

CURB SYSTEMS  
E-CURB™ & CHEMCURB™  
PENETRATION SEAL SYSTEMS

**CHEM LINK**  
POLYMER INNOVATION

353 E. Lyons Street, Schoolcraft, MI 49087  
1.800.826.1681 • www.chemlink.com

A **SOPREMA**® GROUP COMPANY

BR1300 REV. 8/2018

**CHEM LINK**  
POLYMER INNOVATION



# E-CURB & CHEMCURB

## SIMPLE SEAL SYSTEMS FOR DIFFICULT ROOF PENETRATIONS

Penetrations are the most common source of roof leaks. The best low-slope roof is compromised the moment it's punctured. Punctures can occur from mechanical fasteners, pipes, electrical conduits, solar arrays, lighting support, wiring, HVAC, etc. Every penetration is an invitation for water to pass through the membrane and into the building's interior.

To protect the original investment of the roof, avoid callbacks and prevent damage caused by water, building owners and contractors should choose the most effective, proven, long-term penetration seals available: Chem Link's ChemCurb™ & E-Curb™ Systems. Curbs can turn the weakest part of a building's roof into the strongest.

- Easy to install - normally fewer than 15 minutes per penetration
- Fits any size or shape penetration allowing for unlimited configurations
- Can be bonded to a wide range of surfaces
- Sealants & adhesives are 100% solids and do not shrink
- E-Curb and ChemCurb installations are impervious to ice, corrosion, UV light and ponding water
- Adhesives & sealants are solvent-free and contain virtually no VOCs, minimizing health risks to contractors and building occupants

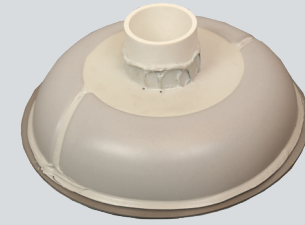


## TYPES OF CURBS AND AVAILABLE SIZES

### CHEMCURB

Heavy-duty ChemCurbs are composed of tough, polyester resin 2 inches in height and are available in a variety of shapes and sizes. These components can be configured for square, rectangular, round or oval patterns of varying sizes to accommodate virtually any type and number of penetrations. Available in gray only.

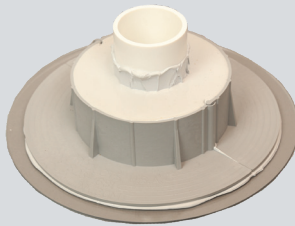
Straight (length)	6 & 12 inch
Rounds (i.d.)	5 & 7.5 inch
Corners (radius)	2 inch



### E-CURB

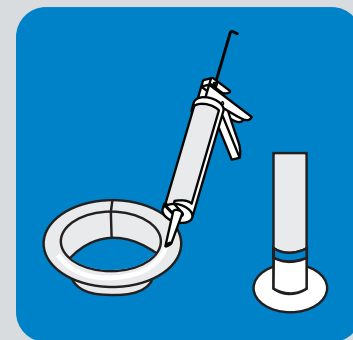
Economical thinner-walled, lighter-weight E-Curbs are composed of tough, vinyl resin and are engineered with a flange to ensure a watertight seal. They are available in a variety of sizes and shapes and can be used to create virtually any configuration to surround penetrations. Available in gray and white.

Straight (length)	3 & 8 inch
Rounds (i.d.)	3, 4, 5, 6, & 9 inch
Corners (radius)	2 inch
Rectangle	4.5 x 3.5 inch



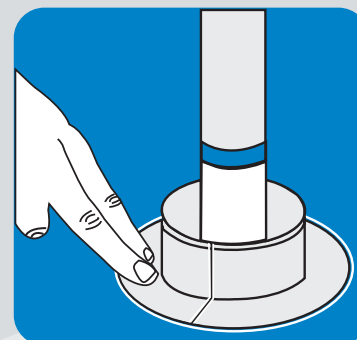
## EASY TO INSTALL 3 PART SYSTEM

USING CURBS, ADHESIVE & POURABLE SEALANT

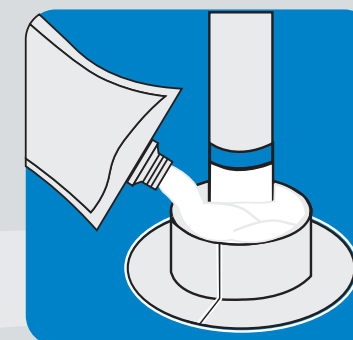


- Prime penetrations using M-1® Universal Sealant/Adhesive, extending up 3 inches from the base and tool in. Apply three 1/4 inch diameter beads to the bottom of each curb section.

\*DuraLink™ 50 should be substituted for M-1 when used on metal roof surfaces.



- Press the curb in place. Seal around the joints and outside of the curb with a bead of M-1 and tool to ensure a monolithic seal.



- Fill curb with 1-Part® pourable sealer when installing around high movement details and on granulated surfaces.

\*Other options available such as Pro Pack (two-component urethane), DuraLink 50 for vertical or steep slope options and DuraSil SL for silicone roof coatings or hot pipe applications.

\* For complete installation instructions refer to the technical data sheets available on chemlink.com.



## CURBS FOR SOLAR MOUNTS

E-Curbs provide an efficient penetration seal system for mounting solar panel frames. Electrical and solar contractors no longer need to outsource the installation of solar panels due to the ease and efficiency of E-Curbs. Without needing to sub-contract out the installation, electrical and solar contractors will save time and labor, leading to cost savings.

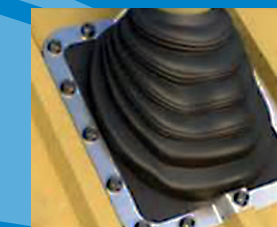
## SUPERIOR TO OTHER PENETRATION SEAL SYSTEMS

- Notorious for corroding
- Installed with asphaltic, cutback fillers known for shrinking and gathering water
- Labor intensive - taking 45+ minutes to install

## PITCH PANS



## BOOTS



- Attached with metal screws which create penetrations
- Boots do not offer flexible configurations to accommodate various large or complex penetrations